

# 100% KENTUCKY

Transition to 100% wind, water, and solar (WWS) for all purposes  
(electricity, transportation, heating/cooling, industry)



Residential rooftop PV  
3.2%



Solar PV plants  
79.7%



CSP plants  
5%



Onshore wind  
8.5%



Offshore wind  
0%

## 2050

PROJECTED  
ENERGY MIX



Commercial/govt  
rooftop PV  
2.1%



Wave devices  
0%



Geothermal  
0%



Hydroelectric  
1.5%



Tidal turbines  
0%



### 40-Year Jobs Created

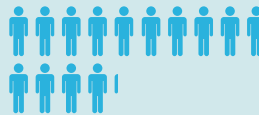
Number of jobs where a person  
is employed for 40 consecutive years

Operation jobs:



47,719

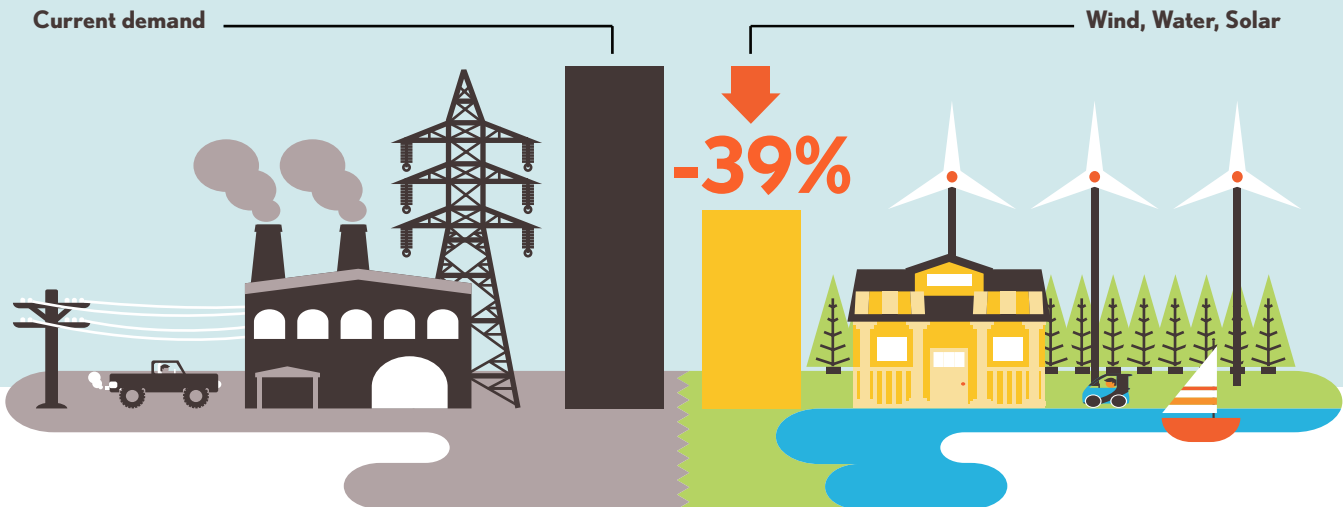
Construction jobs:



142,163

1 figure = 10,000

Using WWS electricity for everything, instead of burning fuel, and  
improving energy efficiency means you need much less energy.



VISIT [THESOLUTIONSPROJECT.ORG](http://thesolutionsproject.org)

TO LEARN MORE AND [100.ORG](http://100.org) TO JOIN THE MOVEMENT

THE  
**SOLUTIONS**  
PROJECT

Data from Stanford University - For more information, visit  
<http://go100.me/50StateTargets>

FOLLOW US ON



100isNow

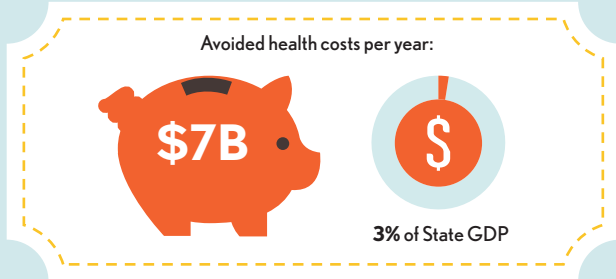


SolutionsProj

# 100% KENTUCKY

Transition to 100% wind, water, and solar (WWS) for all purposes  
(electricity, transportation, heating/cooling, industry)

## Avoided Mortality and Illness Costs

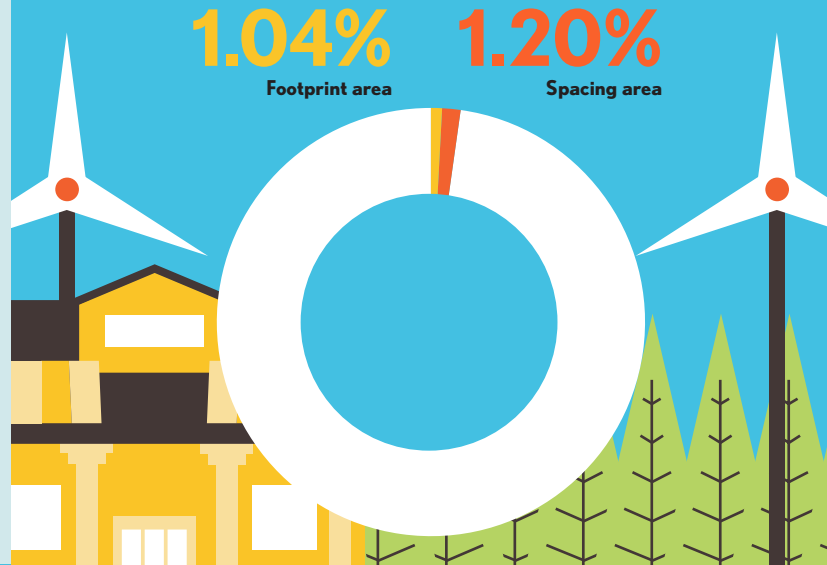


Air pollution deaths avoided every year: **887**



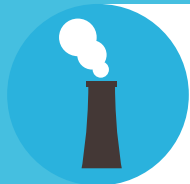
Plan pays for itself in as little as **2** years from air pollution and climate cost savings alone

## Percentage of Kentucky Land Needed for All New WWS Generators



## Future Energy Costs 2050

BAU (Business as usual)      WWS (Wind, water, solar)



U.S. average fossil-fuel energy costs\*  
**9.6 c/kWh**

\*Health and climate external costs of fossil fuels are another 5.7c/kWh



State average WWS electricity costs  
**8.7 c/kWh**

## Money in Your Pocket

**(P) = \$2,000**

Annual energy, health, and climate cost savings per person in 2050: **\$21,354**



Annual energy cost savings per person in 2050: **\$516**



**VISIT [THE SOLUTIONS PROJECT.ORG](http://thesolutionsproject.org)**

**TO LEARN MORE AND [100.ORG](http://100.org) TO JOIN THE MOVEMENT**

THE  
**SOLUTIONS**  
PROJECT

Data from Stanford University - For more information, visit  
<http://go100.me/50StateTargets>

FOLLOW US ON



100isNow



SolutionsProj