

100% ANGOLA

Transition to 100% wind, water, and solar (WWS) for all purposes
(electricity, transportation, heating/cooling, industry)



Residential rooftop solar
36.9%



Solar plant
9.4%



Concentrated solar plant
10.5%



Onshore wind
8%



Offshore wind
1.7%

2050

PROJECTED ENERGY MIX



Commercial/govt rooftop solar
27.6%



Wave energy
3%



Geothermal energy
0%



Hydroelectric
2.8%



Tidal turbine
0.1%



40-Year Jobs Created

Number of jobs where a person is employed for 40 consecutive years

Operation jobs:



18,040

Construction jobs:



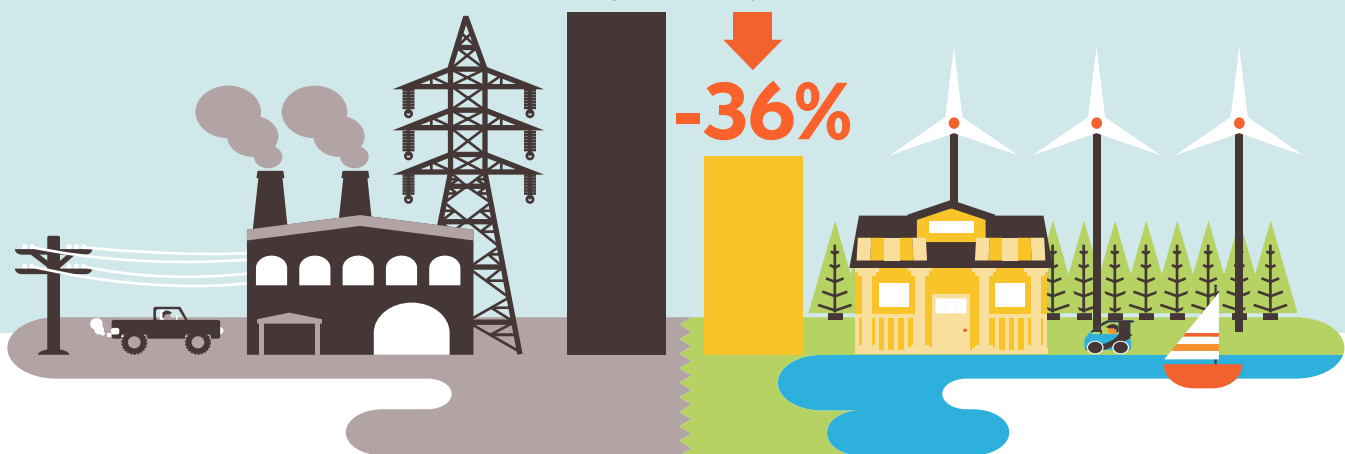
31,922

= 5,000

Using WWS electricity for everything, instead of burning fuel, and improving energy efficiency means you need much less energy.

2050 Demand with BAU

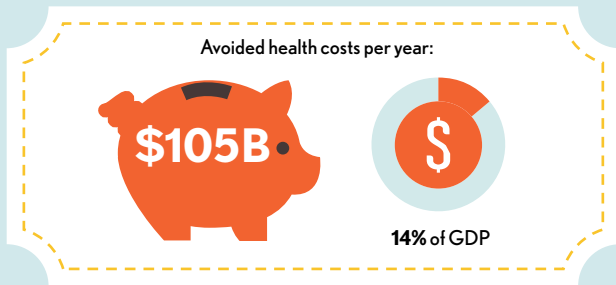
2050 Wind, Water, Solar



100% ANGOLA

Transition to 100% wind, water, and solar (WWS) for all purposes
(electricity, transportation, heating/cooling, industry)

Avoided Mortality and Illness Costs



Air pollution deaths avoided every year: **18,694**

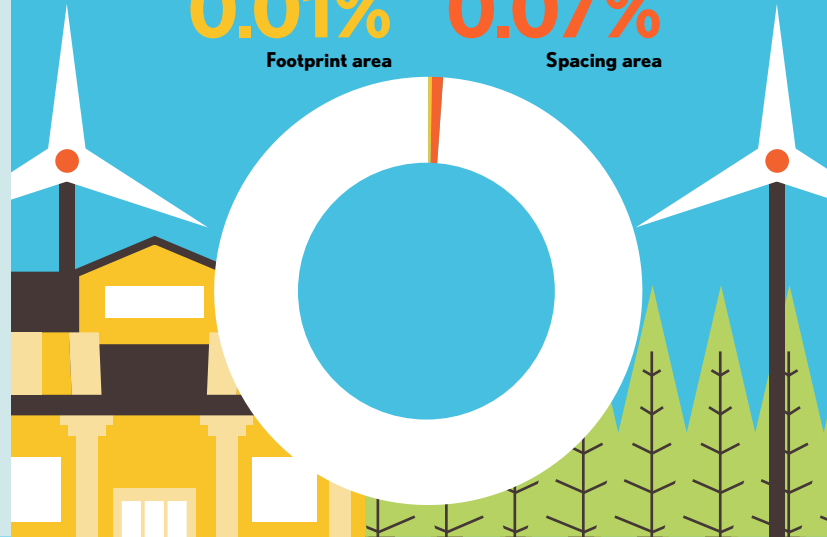
= 2,000



Plan pays for itself in as little as **0.9** years from air pollution and climate cost savings alone.

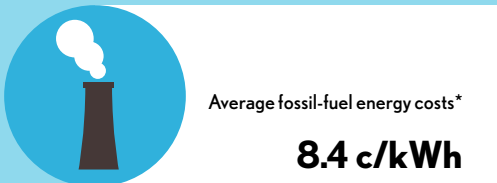
Percentage of Land Needed for All New WWS Generators

0.01% Footprint area
0.07% Spacing area



Future Energy Costs 2050

BAU (Business as usual) WWS (Wind, water, solar)



*Health and climate external costs of fossil fuels are another 5.7c/kWh



Money in Your Pocket

= \$200

Annual energy, health, and climate cost savings per person in 2050: **\$2,619**



Annual energy cost savings per person in 2050: **\$0**