

100% CHINESE TAIPEI

Transition to 100% wind, water, and solar (WWS) for all purposes
(electricity, transportation, heating/cooling, industry)



Residential rooftop solar
1.5%



Solar plant
26.6%



Concentrated solar plant
0%



Onshore wind
2%



Offshore wind
38%

2050

PROJECTED
ENERGY MIX

Commercial/govt rooftop solar
3.1%



Wave energy
0.7%



Geothermal energy
27.2%



Hydroelectric
0.9%



Tidal turbine
0%



40-Year Jobs Created

Number of jobs where a person is employed for 40 consecutive years

Operation jobs:



168,313

Construction jobs:



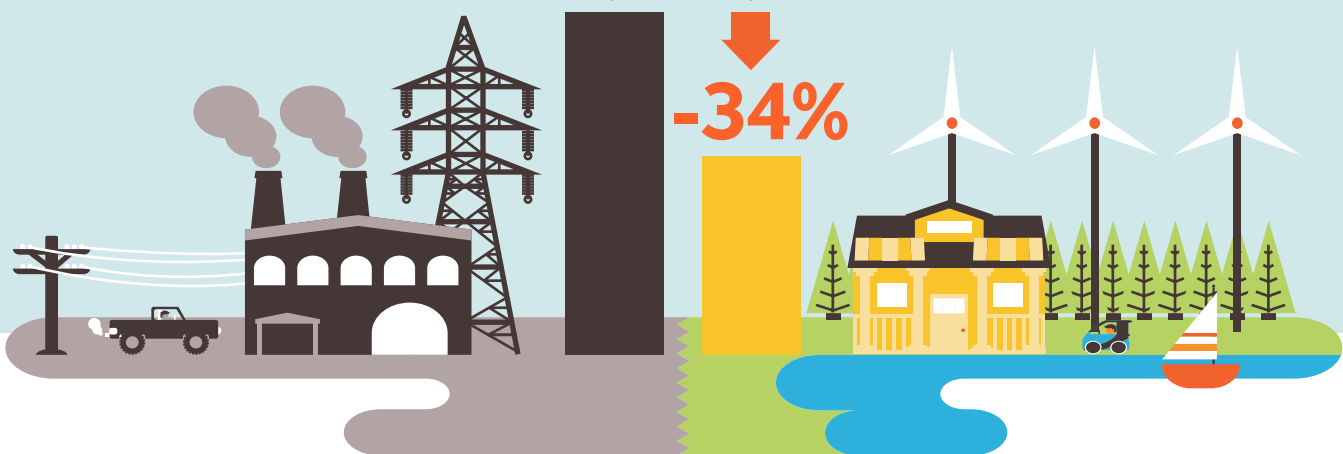
261,101

1 = 15,000

Using WWS electricity for everything, instead of burning fuel, and improving energy efficiency means you need much less energy.

2050 Demand with BAU

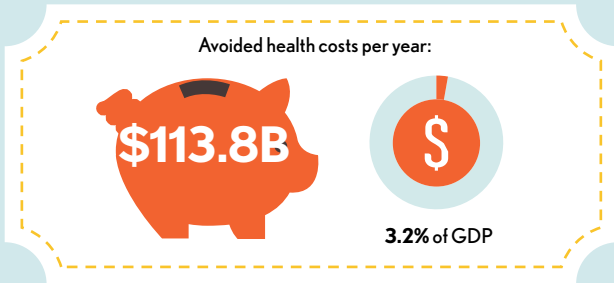
2050 Wind, Water, Solar



100% CHINESE TAIPEI

Transition to 100% wind, water, and solar (WWS) for all purposes
(electricity, transportation, heating/cooling, industry)

Avoided Mortality and Illness Costs

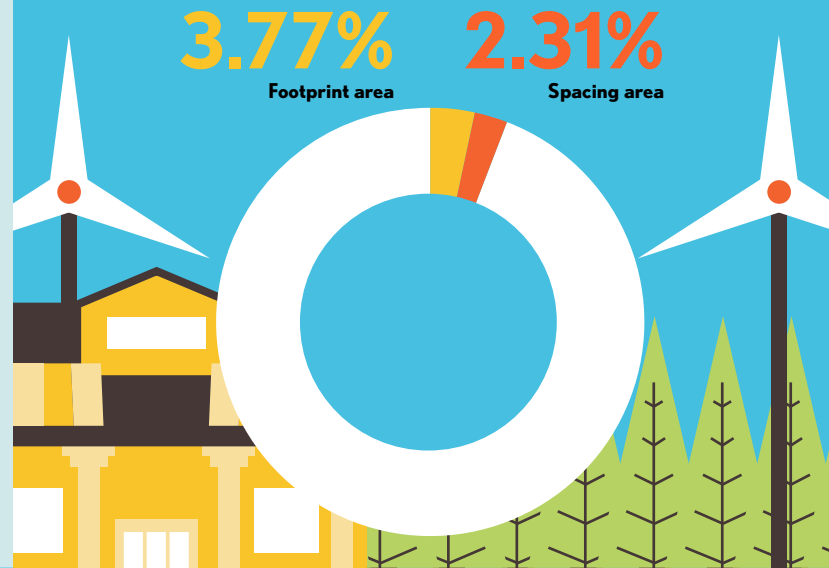


Air pollution deaths avoided every year: **6,164**



Plan pays for itself in as little as **2.0** years from air pollution and climate cost savings alone.

Percentage of Land Needed for All New WWS Generators



Future Energy Costs 2050

● BAU (Business as usual) ● WWS (Wind, water, solar)



Average fossil-fuel energy costs*

9.6 c/kWh

*Health and climate external costs of fossil fuels are another 5.7c/kWh



Average WWS electricity costs

10.2 c/kWh

Money in Your Pocket

☞ = \$1,000

Annual energy, health, and climate cost savings per person in 2050: **\$12,578**



Annual energy cost savings per person in 2050: **\$378**

