

# 100% COLOMBIA

Transition to 100% wind, water, and solar (WWS) for all purposes  
(electricity, transportation, heating/cooling, industry)



Residential rooftop solar  
**9.4%**



Solar plant  
**22.1%**



Concentrated solar plant  
**5%**



Onshore wind  
**25%**



Offshore wind  
**14.1%**

## 2050

PROJECTED ENERGY MIX



Commercial/govt rooftop solar  
**6.3%**



Wave energy  
**1%**



Geothermal energy  
**0%**



Hydroelectric  
**16.7%**



Tidal turbine  
**0.4%**




### 40-Year Jobs Created


Number of jobs where a person is employed for 40 consecutive years

Operation jobs: 

**75,366**

Construction jobs: 

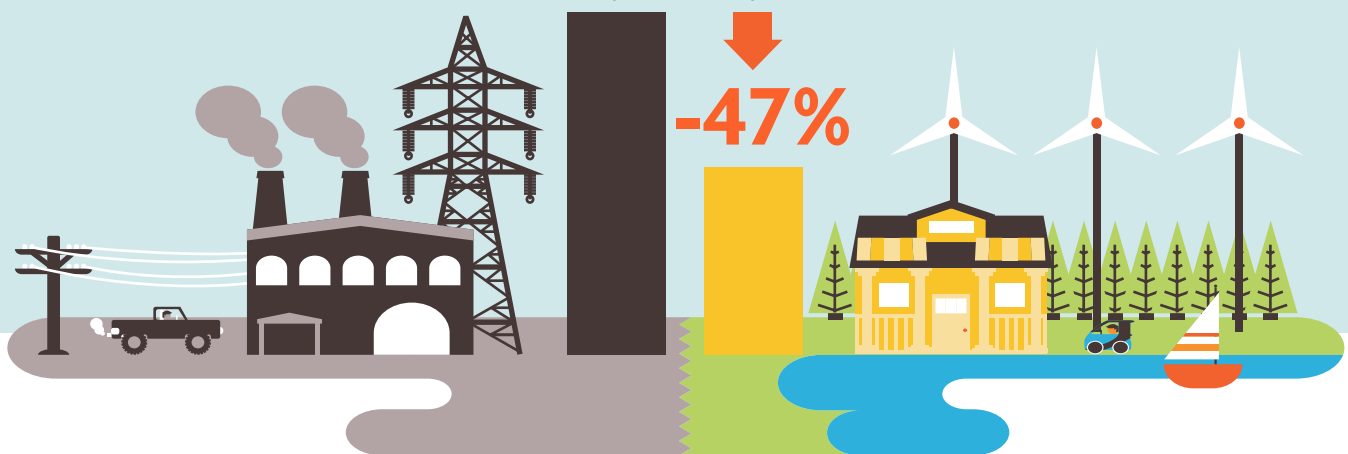
**66,571**

 = 10,000

Using WWS electricity for everything, instead of burning fuel, and improving energy efficiency means you need much less energy.

2050 Demand with BAU

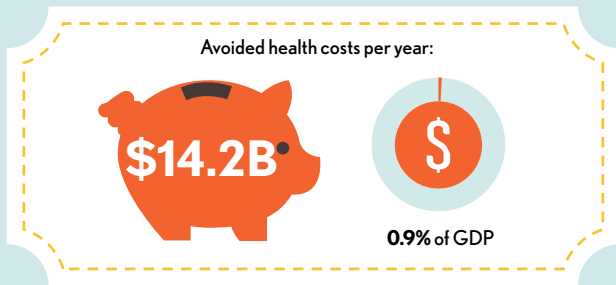
2050 Wind, Water, Solar



# 100% COLOMBIA

Transition to 100% wind, water, and solar (WWS) for all purposes  
(electricity, transportation, heating/cooling, industry)

## Avoided Mortality and Illness Costs



Air pollution deaths avoided every year: **1,986**



Plan pays for itself in as little as **2.6** years from air pollution and climate cost savings alone.

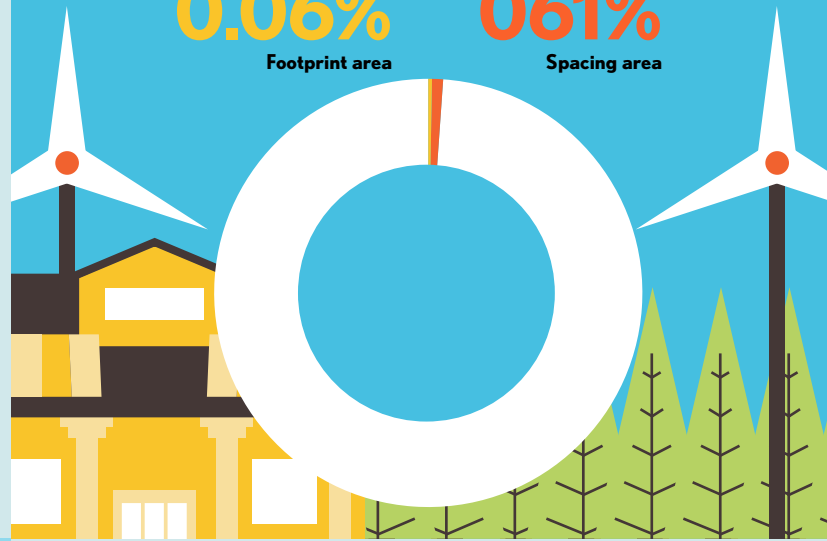
## Percentage of Land Needed for All New WWS Generators

**0.06%**

Footprint area

**061%**

Spacing area



## Future Energy Costs 2050

BAU (Business as usual)

WWS (Wind, water, solar)



Average fossil-fuel energy costs\*

**8 c/kWh**

\*Health and climate external costs of fossil fuels are another 5.7c/kWh



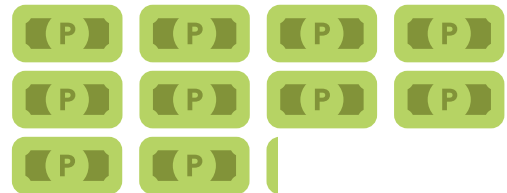
Average WWS electricity costs

**6.5 c/kWh**

## Money in Your Pocket

**(P) = \$100**

Annual energy, health, and climate cost savings per person in 2050: **\$1,077**



Annual energy cost savings per person in 2050: **\$40**

