

# 100% ECUADOR

Transition to 100% wind, water, and solar (WWS) for all purposes  
(electricity, transportation, heating/cooling, industry)



Residential rooftop solar  
**25.2%**



Solar plant  
**11.6%**



Concentrated solar plant  
**0%**



Onshore wind  
**35%**



Offshore wind  
**1%**

## 2050

PROJECTED ENERGY MIX



Commercial/govt rooftop solar  
**13.9%**



Wave energy  
**2%**



Geothermal energy  
**0.3%**



Hydroelectric  
**10.4%**



Tidal turbine  
**0.6%**



### 40-Year Jobs Created



Number of jobs where a person is employed for 40 consecutive years

Operation jobs: 

**19,111**

Construction jobs: 

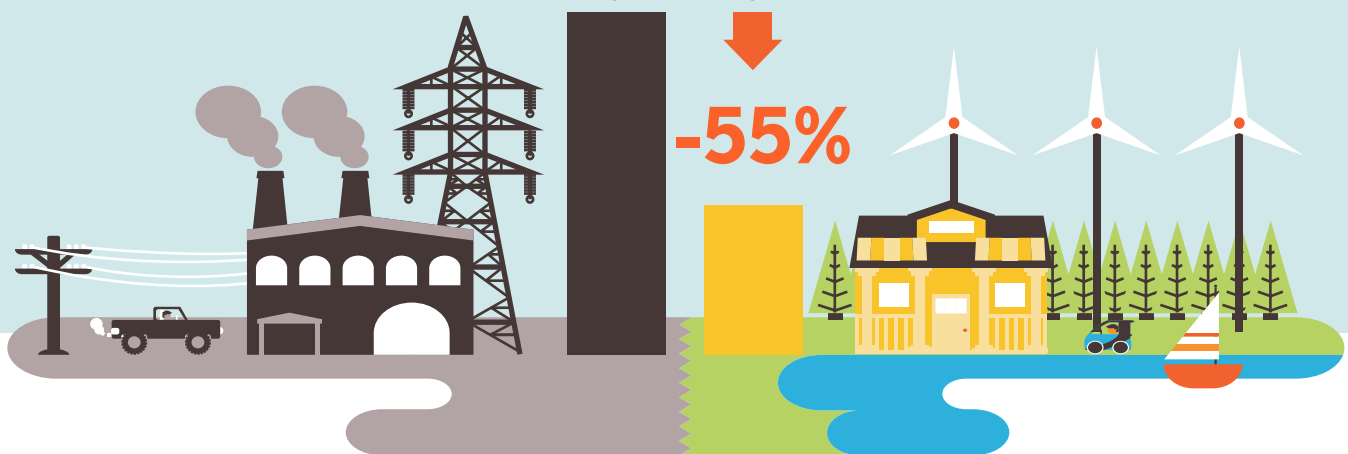
**24,165**

 = 2,000 

Using WWS electricity for everything, instead of burning fuel, and improving energy efficiency means you need much less energy.

2050 Demand with BAU

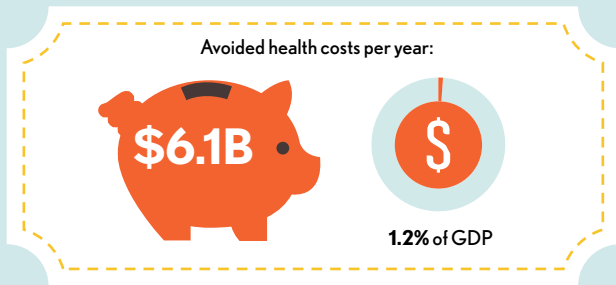
2050 Wind, Water, Solar



# 100% ECUADOR

Transition to 100% wind, water, and solar (WWS) for all purposes  
(electricity, transportation, heating/cooling, industry)

## Avoided Mortality and Illness Costs



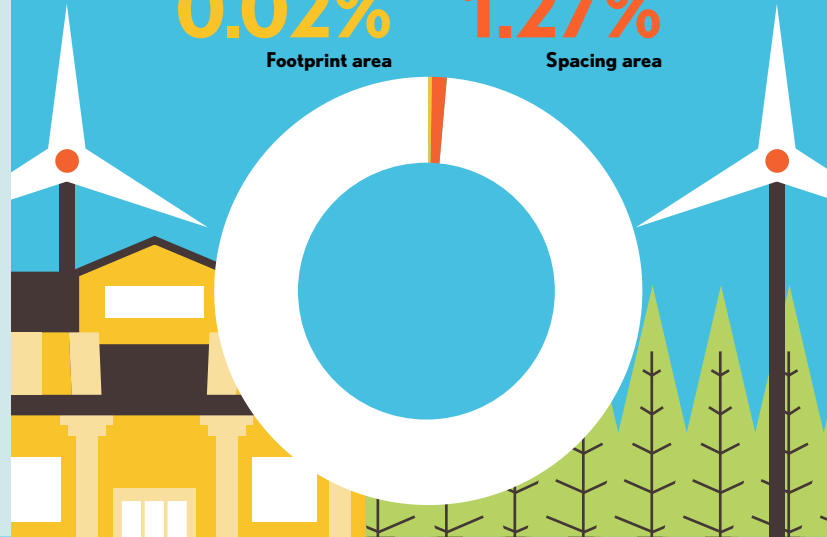
Air pollution deaths avoided every year: **913**



Plan pays for itself in as little as **2.1** years from air pollution and climate cost savings alone.

## Percentage of Land Needed for All New WWS Generators

**0.02%** Footprint area  
**1.27%** Spacing area



## Future Energy Costs 2050

BAU (Business as usual)      WWS (Wind, water, solar)



Average fossil-fuel energy costs\*

**9.3 c/kWh**

\*Health and climate external costs of fossil fuels are another 5.7c/kWh



Average WWS electricity costs

**8.8 c/kWh**

## Money in Your Pocket

= \$100

Annual energy, health, and climate cost savings per person in 2050: **\$1,180**



Annual energy cost savings per person in 2050: **\$28**

