

# 100% FINLAND

Transition to 100% wind, water, and solar (WWS) for all purposes  
(electricity, transportation, heating/cooling, industry)



Residential rooftop solar  
**0.2%**



Solar plant  
**19.1%**



Concentrated solar plant  
**0%**



Onshore wind  
**32%**



Offshore wind  
**41%**

## 2050

PROJECTED ENERGY MIX



Commercial/govt rooftop solar  
**0.6%**



Wave energy  
**1.5%**



Geothermal energy  
**0%**



Hydroelectric  
**5.6%**



Tidal turbine  
**0%**



### 40-Year Jobs Created


Number of jobs where a person is employed for 40 consecutive years

Operation jobs: 

**82,222**

Construction jobs: 

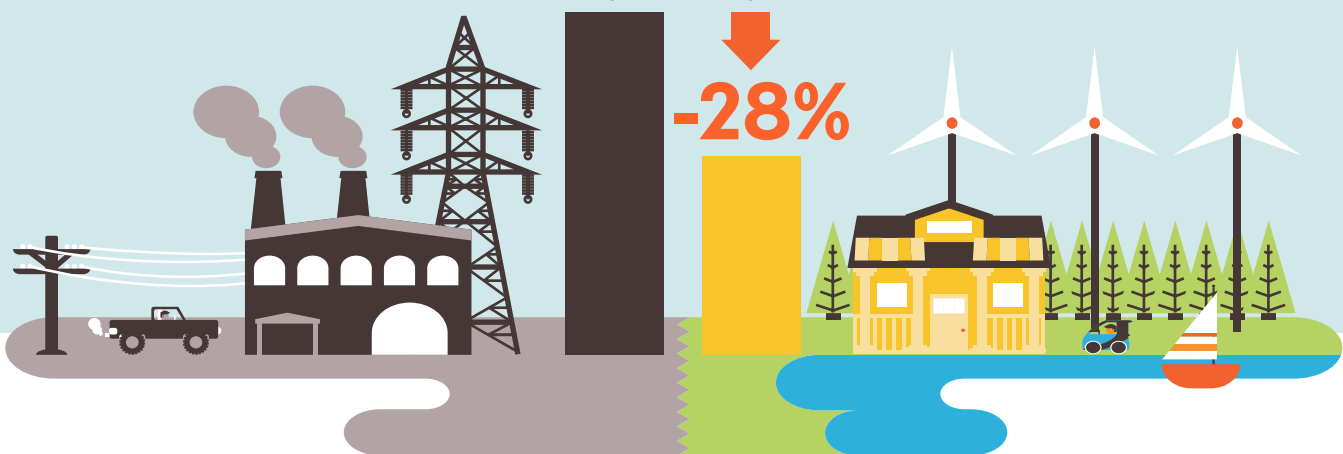
**47,316**

 = 10,000

Using WWS electricity for everything, instead of burning fuel, and improving energy efficiency means you need much less energy.

2050 Demand with BAU

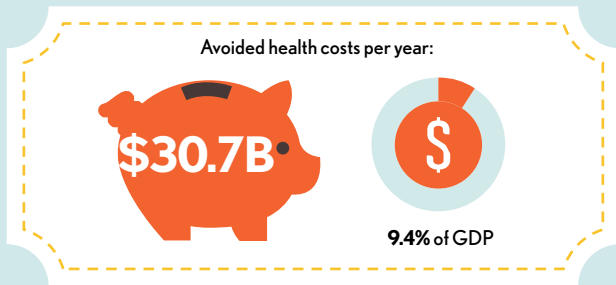
2050 Wind, Water, Solar



# 100% FINLAND

Transition to 100% wind, water, and solar (WWS) for all purposes  
(electricity, transportation, heating/cooling, industry)

## Avoided Mortality and Illness Costs



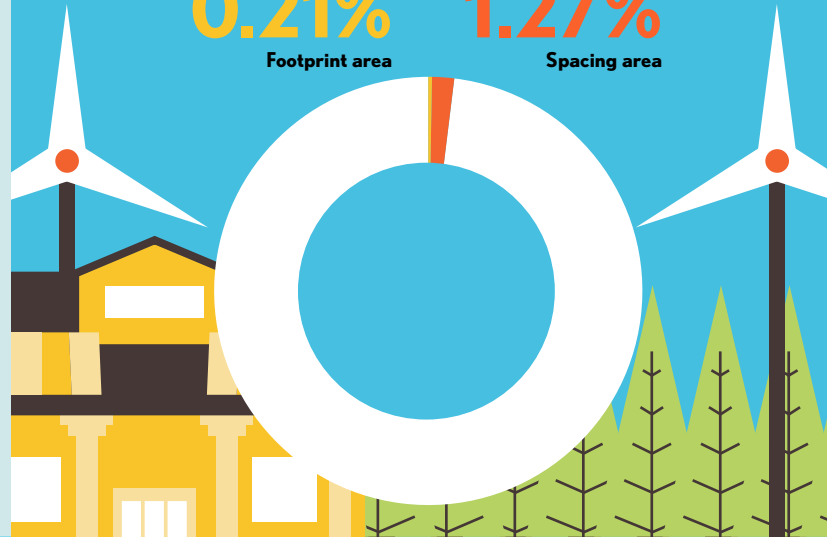
Air pollution deaths avoided every year: **2,697**



Plan pays for itself in as little as **2.4** years from air pollution and climate cost savings alone.

## Percentage of Land Needed for All New WWS Generators

**0.21%** Footprint area  
**1.27%** Spacing area



## Future Energy Costs 2050

BAU (Business as usual) WWS (Wind, water, solar)

Average fossil-fuel energy costs\*

**9.6 c/kWh**

\*Health and climate external costs of fossil fuels are another 5.7c/kWh

Average WWS electricity costs

**9.8 c/kWh**

## Money in Your Pocket

**(P)** = \$1,000

Annual energy, health, and climate cost savings per person in 2050: **\$11,921**



Annual energy cost savings per person in 2050: **\$335**

