

100% JAMAICA

Transition to 100% wind, water, and solar (WWS) for all purposes
(electricity, transportation, heating/cooling, industry)



Residential rooftop solar
16.4%



Solar plant
35%



Concentrated solar plant
0%



Onshore wind
10%



Offshore wind
20%

2050

PROJECTED ENERGY MIX



Commercial/govt rooftop solar
12.6%



Wave energy
5%



Geothermal energy
0%



Hydroelectric
0.5%



Tidal turbine
0.5%



40-Year Jobs Created

Number of jobs where a person is employed for 40 consecutive years

Operation jobs:



4,753

Construction jobs:



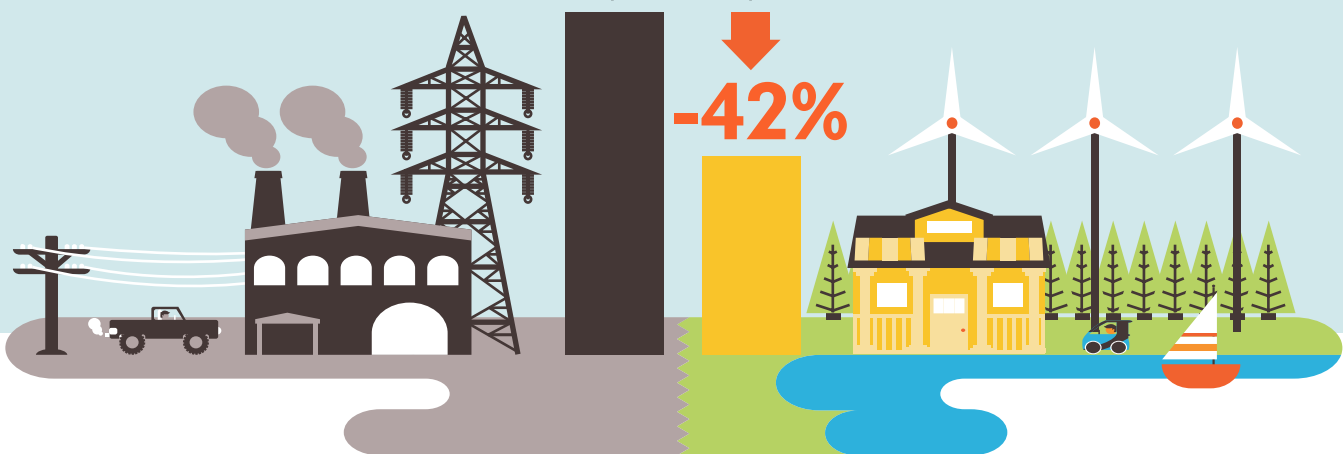
5,662

= 500

Using WWS electricity for everything, instead of burning fuel, and improving energy efficiency means you need much less energy.

2050 Demand with BAU

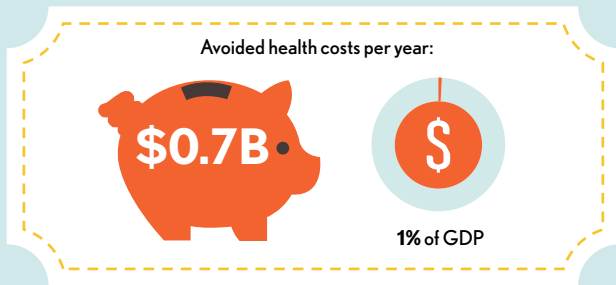
2050 Wind, Water, Solar



100% JAMAICA

Transition to 100% wind, water, and solar (WWS) for all purposes
(electricity, transportation, heating/cooling, industry)

Avoided Mortality and Illness Costs



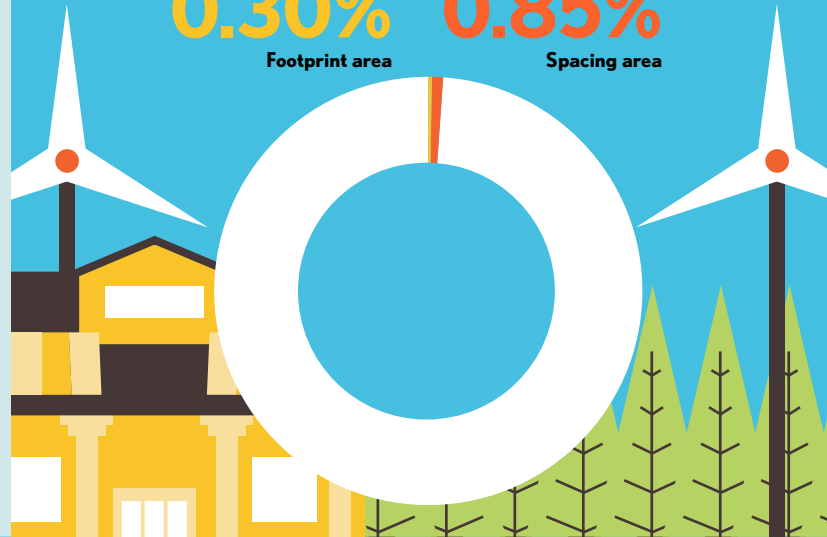
Air pollution deaths avoided every year: **118**



Plan pays for itself in as little as **2.3** years from air pollution and climate cost savings alone.

Percentage of Land Needed for All New WWS Generators

0.30% Footprint area
0.85% Spacing area



Future Energy Costs 2050

● BAU (Business as usual) ● WWS (Wind, water, solar)



Average fossil-fuel energy costs*

12.1 c/kWh

*Health and climate external costs of fossil fuels are another 5.7c/kWh



Average WWS electricity costs

10.7 c/kWh

Money in Your Pocket

(P) = \$200

Annual energy, health, and climate cost savings per person in 2050: **\$1,263**



Annual energy cost savings per person in 2050: **\$50**

