

# 100% JAPAN

Transition to 100% wind, water, and solar (WWS) for all purposes  
(electricity, transportation, heating/cooling, industry)



Residential rooftop solar  
**7.4%**



Solar plant  
**62.2%**



Concentrated solar plant  
**2%**



Onshore wind  
**4.5%**



Offshore wind  
**6%**

## 2050

PROJECTED ENERGY MIX



Commercial/govt rooftop solar  
**11.4%**



Wave energy  
**1%**



Geothermal energy  
**0.6%**



Hydroelectric  
**4.7%**



Tidal turbine  
**0.2%**



### 40-Year Jobs Created

Number of jobs where a person is employed for 40 consecutive years

Operation jobs:



**832,058**

Construction jobs:

**1** = 50,000

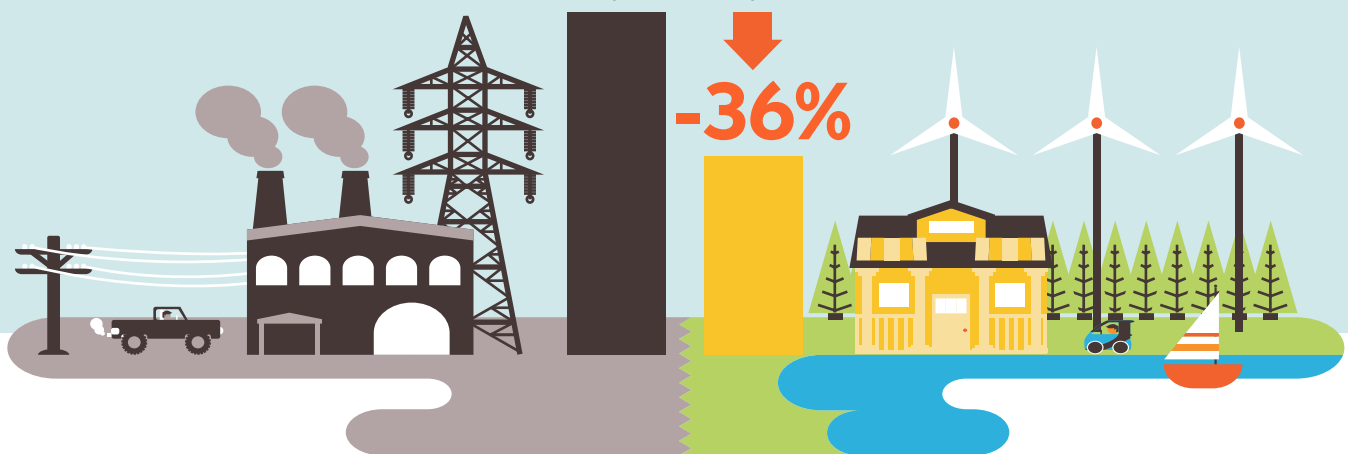


**650,486**

Using WWS electricity for everything, instead of burning fuel, and improving energy efficiency means you need much less energy.

2050 Demand with BAU

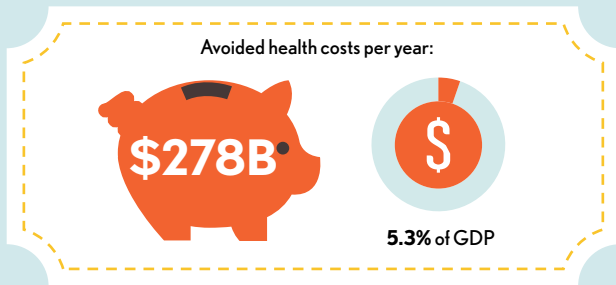
2050 Wind, Water, Solar



# 100% JAPAN

Transition to 100% wind, water, and solar (WWS) for all purposes  
(electricity, transportation, heating/cooling, industry)

## Avoided Mortality and Illness Costs

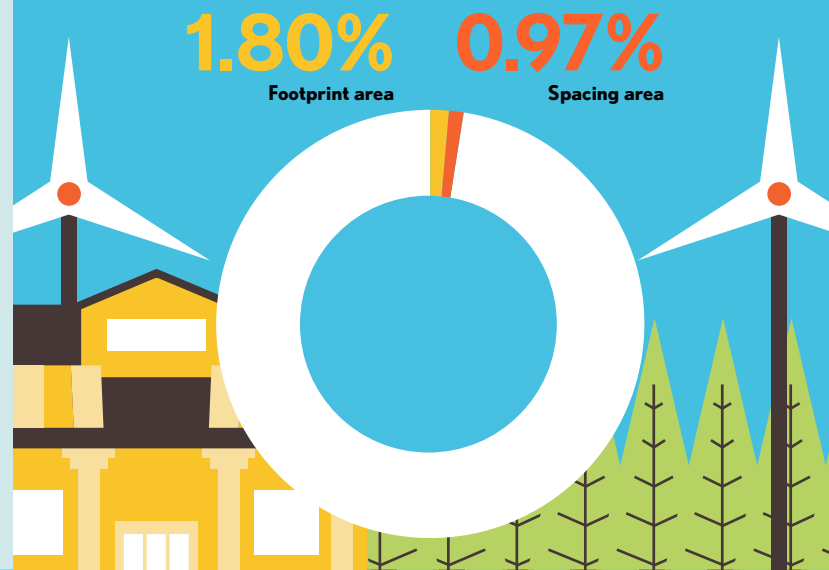


Air pollution deaths avoided every year: **28,833**



Plan pays for itself in as little as **1.3** years from air pollution and climate cost savings alone.

## Percentage of Land Needed for All New WWS Generators



## Future Energy Costs 2050

● BAU (Business as usual) ● WWS (Wind, water, solar)



Average fossil-fuel energy costs\*

**10.4 c/kWh**

\*Health and climate external costs of fossil fuels are another 5.7c/kWh



Average WWS electricity costs

**7.4 c/kWh**

## Money in Your Pocket

☞ = \$1,000

Annual energy, health, and climate cost savings per person in 2050: **\$8,837**



Annual energy cost savings per person in 2050: **\$434**

