

100% JORDAN

Transition to 100% wind, water, and solar (WWS) for all purposes
(electricity, transportation, heating/cooling, industry)



Residential rooftop solar
9.4%



Solar plant
36.2%



Concentrated solar plant
15%



Onshore wind
30%



Offshore wind
0%

2050

PROJECTED
ENERGY MIX



Commercial/govt rooftop solar
9.1%



Wave energy
0%



Geothermal energy
0%



Hydroelectric
0.1%



Tidal turbine
0.2%




40-Year Jobs Created

Number of jobs where a person is employed for 40 consecutive years

Operation jobs:  **11,082**

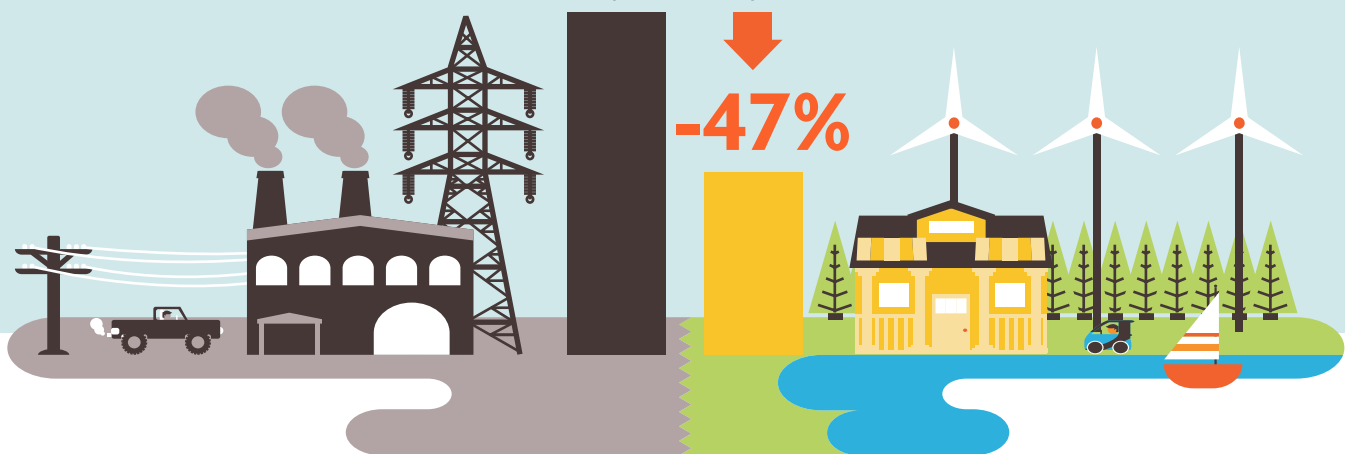
Construction jobs:  **11,438**

 = 1,000

Using WWS electricity for everything, instead of burning fuel, and improving energy efficiency means you need much less energy.

2050 Demand with BAU

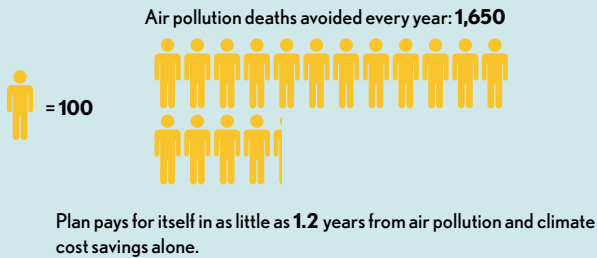
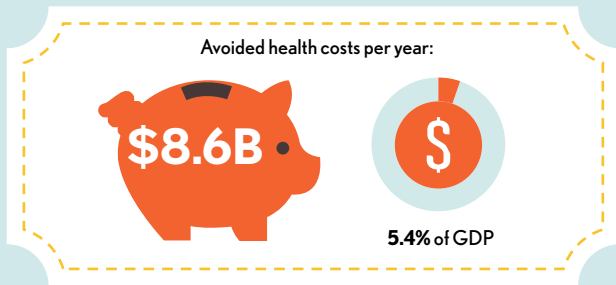
2050 Wind, Water, Solar



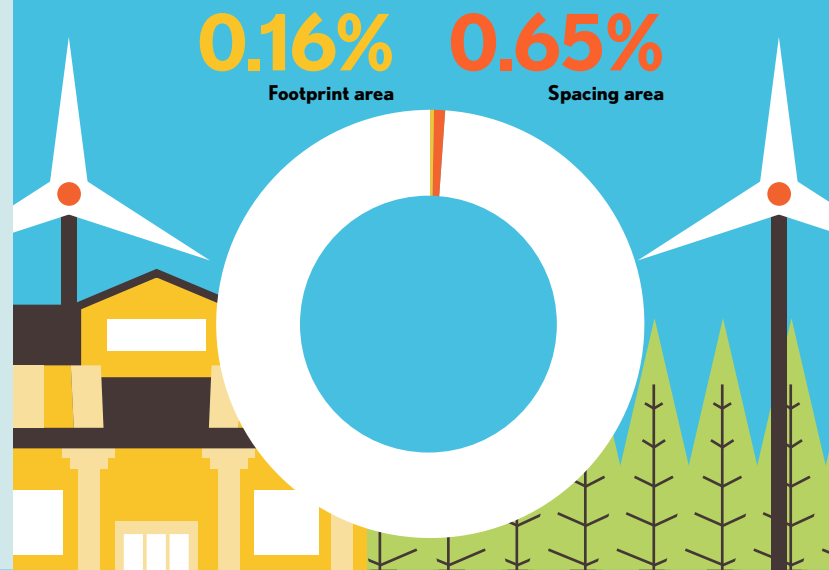
100% JORDAN

Transition to 100% wind, water, and solar (WWS) for all purposes
(electricity, transportation, heating/cooling, industry)

Avoided Mortality and Illness Costs

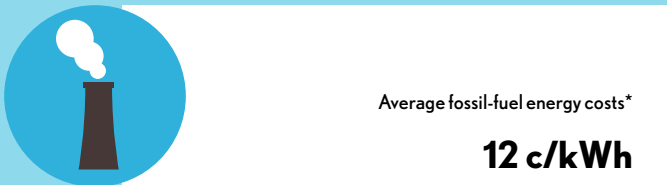


Percentage of Land Needed for All New WWS Generators



Future Energy Costs 2050

BAU (Business as usual) WWS (Wind, water, solar)



*Health and climate external costs of fossil fuels are another 5.7c/kWh



Money in Your Pocket

(P) = \$200

Annual energy, health, and climate cost savings per person in 2050: **\$1,900**



Annual energy cost savings per person in 2050: **\$139**

