

100% LEBANON

Transition to 100% wind, water, and solar (WWS) for all purposes
(electricity, transportation, heating/cooling, industry)



Residential rooftop solar
4.4%



Solar plant
61.4%



Concentrated solar plant
5%



Onshore wind
10%



Offshore wind
8%

2050

PROJECTED
ENERGY MIX

Commercial/govt rooftop solar
8.6%



Wave energy
0.3%



Geothermal energy
0%



Hydroelectric
2.1%



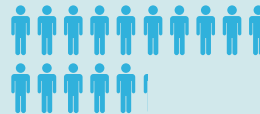
Tidal turbine
0.2%



40-Year Jobs Created

Number of jobs where a person is employed for 40 consecutive years

Operation jobs:



15,242

Construction jobs:



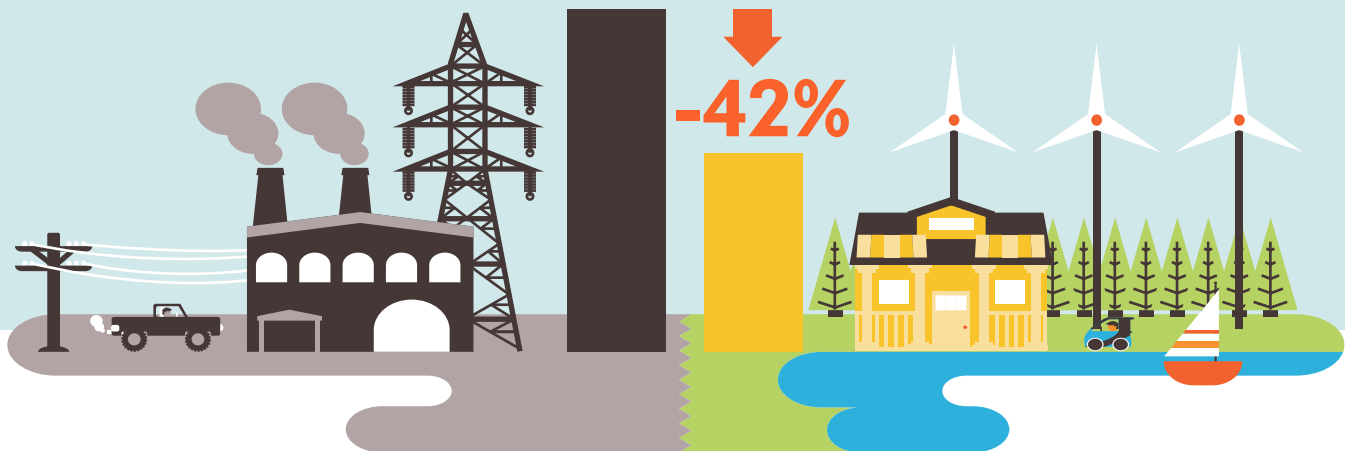
12,169

1 icon = 1,000

Using WWS electricity for everything, instead of burning fuel, and improving energy efficiency means you need much less energy.

2050 Demand with BAU

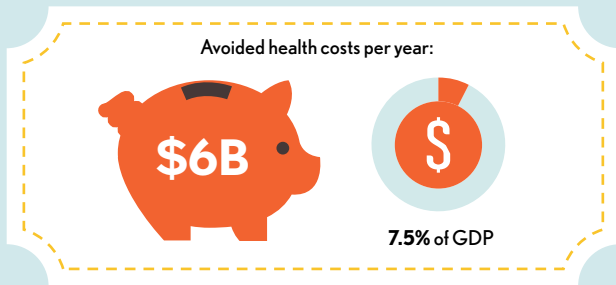
2050 Wind, Water, Solar



100% LEBANON

Transition to 100% wind, water, and solar (WWS) for all purposes
(electricity, transportation, heating/cooling, industry)

Avoided Mortality and Illness Costs



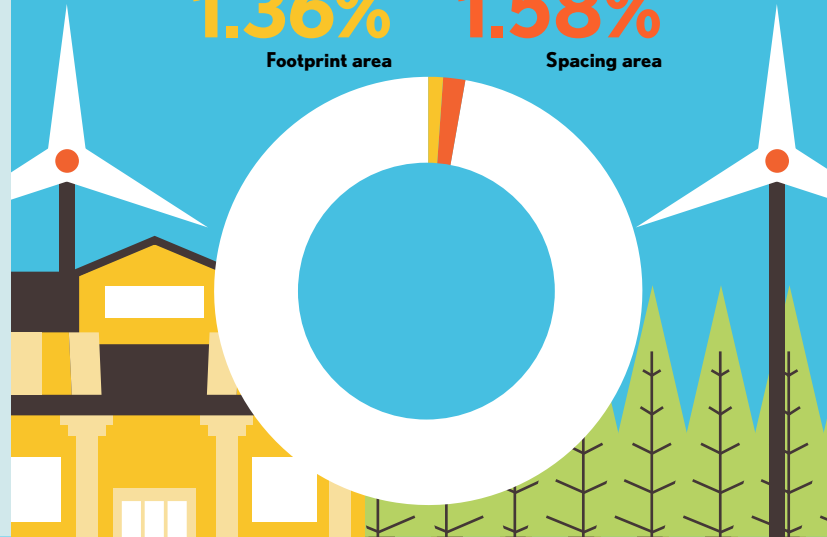
Air pollution deaths avoided every year: **991**



Plan pays for itself in as little as **1.3** years from air pollution and climate cost savings alone.

Percentage of Land Needed for All New WWS Generators

1.36% Footprint area
1.58% Spacing area



Future Energy Costs 2050

BAU (Business as usual) **WWS (Wind, water, solar)**



Average fossil-fuel energy costs*

11.8 c/kWh

*Health and climate external costs of fossil fuels are another 5.7c/kWh



Average WWS electricity costs

7.5 c/kWh

Money in Your Pocket

(P) = \$500

Annual energy, health, and climate cost savings per person in 2050: **\$4,346**



Annual energy cost savings per person in 2050: **\$282**

