

# 100% LIBYA

Transition to 100% wind, water, and solar (WWS) for all purposes  
(electricity, transportation, heating/cooling, industry)



Residential rooftop solar  
**5.6%**



Solar plant  
**39.4%**



Concentrated solar plant  
**15%**



Onshore wind  
**26.5%**



Offshore wind  
**3.5%**

## 2050

PROJECTED ENERGY MIX



Commercial/govt rooftop solar  
**7.9%**



Wave energy  
**2%**



Geothermal energy  
**0%**



Hydroelectric  
**0%**



Tidal turbine  
**0.1%**



### 40-Year Jobs Created


Number of jobs where a person is employed for 40 consecutive years

Operation jobs: 

**36,810**

Construction jobs: 

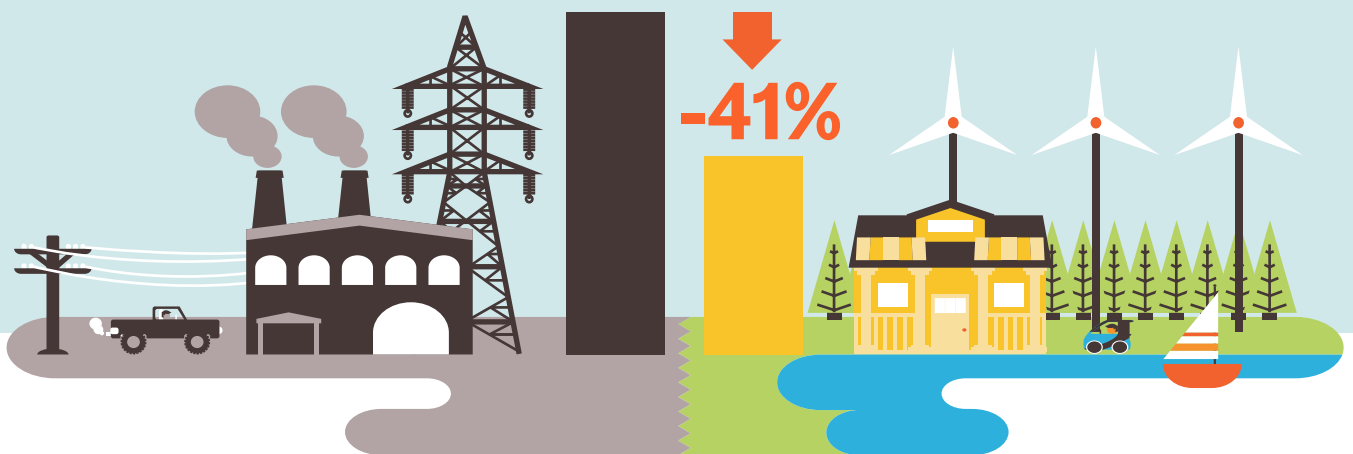
**28,804**

 = 5,000

Using WWS electricity for everything, instead of burning fuel, and improving energy efficiency means you need much less energy.

2050 Demand with BAU

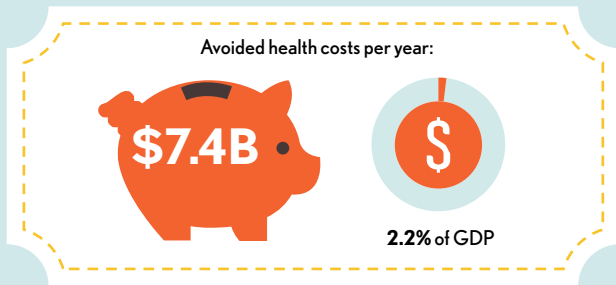
2050 Wind, Water, Solar



# 100% LIBYA

Transition to 100% wind, water, and solar (WWS) for all purposes  
(electricity, transportation, heating/cooling, industry)

## Avoided Mortality and Illness Costs



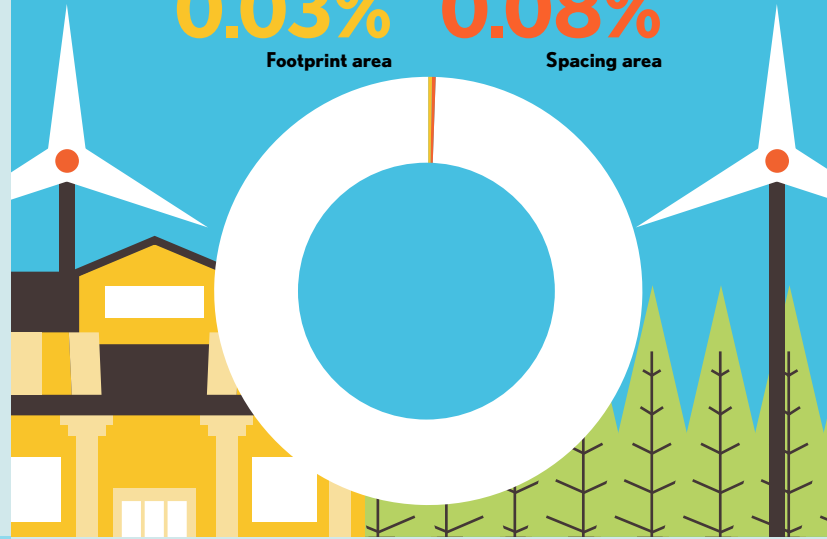
Air pollution deaths avoided every year: **970**



Plan pays for itself in as little as **1.4** years from air pollution and climate cost savings alone.

## Percentage of Land Needed for All New WWS Generators

**0.03%** Footprint area  
**0.08%** Spacing area



## Future Energy Costs 2050

**BAU (Business as usual)**      **WWS (Wind, water, solar)**



Average fossil-fuel energy costs\*

**12.1 c/kWh**

\*Health and climate external costs of fossil fuels are another 5.7c/kWh



Average WWS electricity costs

**8.4 c/kWh**

## Money in Your Pocket

**(P) = \$500**

Annual energy, health, and climate cost savings per person in 2050: **\$3,671**



Annual energy cost savings per person in 2050: **\$240**

