

# 100% LUXEMBOURG

Transition to 100% wind, water, and solar (WWS) for all purposes  
(electricity, transportation, heating/cooling, industry)



Residential rooftop solar  
**5.3%**



Solar plant  
**67.3%**



Concentrated solar plant  
**0%**



Onshore wind  
**22%**



Offshore wind  
**0%**

## 2050

PROJECTED ENERGY MIX

Commercial/govt rooftop solar  
**4.8%**



Wave energy  
**0%**



Geothermal energy  
**0%**



Hydroelectric  
**0.6%**



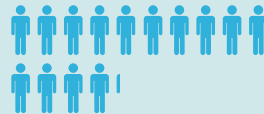
Tidal turbine  
**0%**



### 40-Year Jobs Created

Number of jobs where a person is employed for 40 consecutive years

Operation jobs:



**14,259**

Construction jobs:



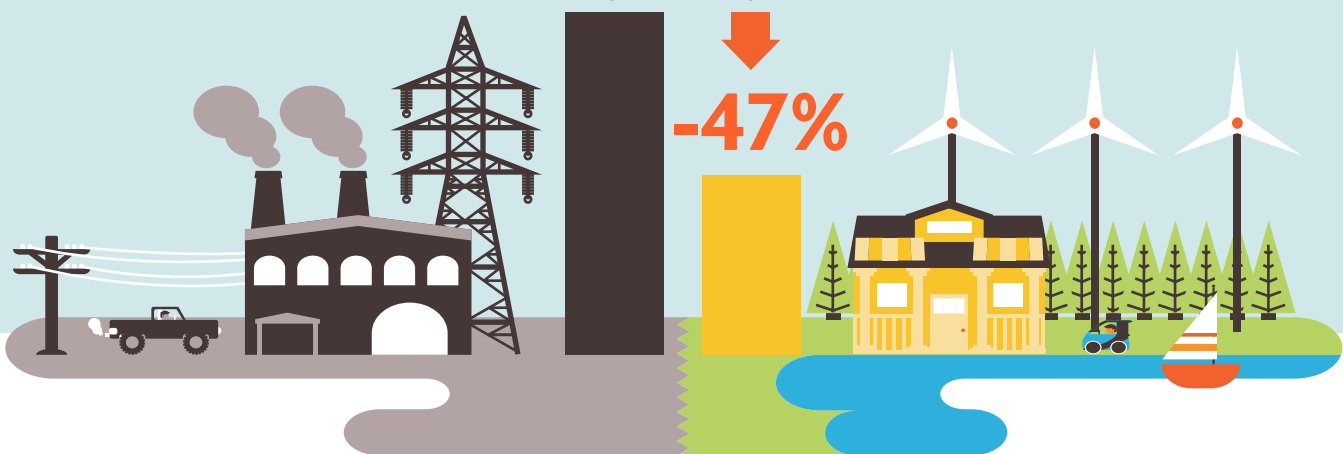
**11,012**

= 1,000

Using WWS electricity for everything, instead of burning fuel, and improving energy efficiency means you need much less energy.

2050 Demand with BAU

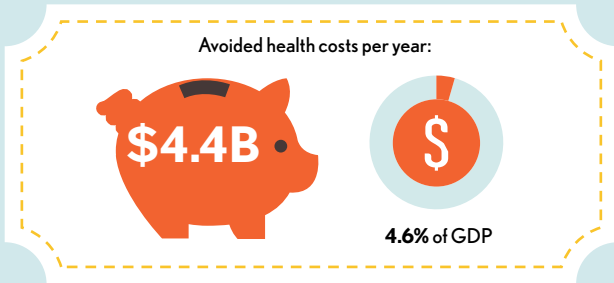
2050 Wind, Water, Solar



# 100% LUXEMBOURG

Transition to 100% wind, water, and solar (WWS) for all purposes  
(electricity, transportation, heating/cooling, industry)

## Avoided Mortality and Illness Costs

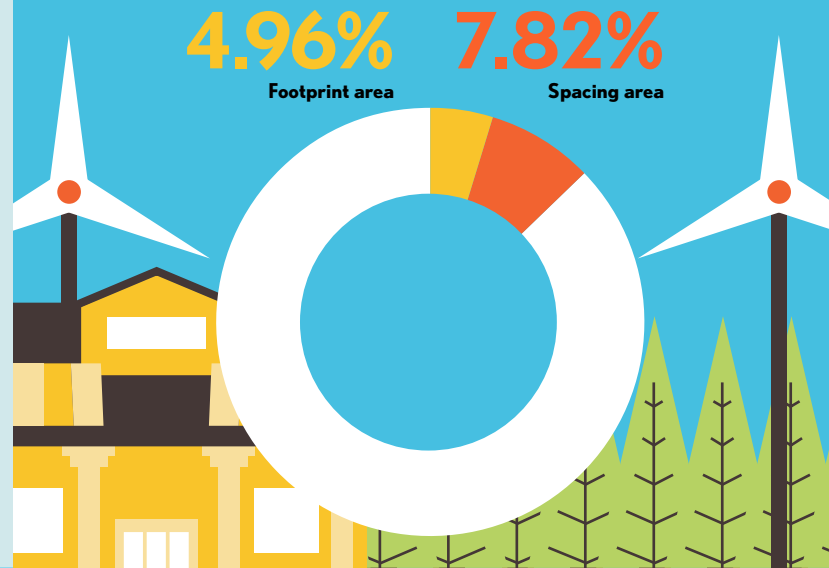


Air pollution deaths avoided every year: **277**



Plan pays for itself in as little as **1.6** years from air pollution and climate cost savings alone.

## Percentage of Land Needed for All New WWS Generators



## Future Energy Costs 2050

BAU (Business as usual)      WWS (Wind, water, solar)



Average fossil-fuel energy costs\*

**11.9 c/kWh**

\*Health and climate external costs of fossil fuels are another 5.7c/kWh



Average WWS electricity costs

**5.7 c/kWh**

## Money in Your Pocket

= \$1000

Annual energy, health, and climate cost savings per person in 2050: **\$14,445**



Annual energy cost savings per person in 2050: **\$906**

