

100% MALAYSIA

Transition to 100% wind, water, and solar (WWS) for all purposes
(electricity, transportation, heating/cooling, industry)



Residential rooftop solar
4.1%



Solar plant
58.2%



Concentrated solar plant
0%



Onshore wind
14%



Offshore wind
8.9%

2050

PROJECTED ENERGY MIX

Commercial/govt rooftop solar
10.7%



Wave energy
1%



Geothermal energy
0%



Hydroelectric
3.1%



Tidal turbine
0%



40-Year Jobs Created

Number of jobs where a person is employed for 40 consecutive years

Operation jobs:



247,611

Construction jobs:



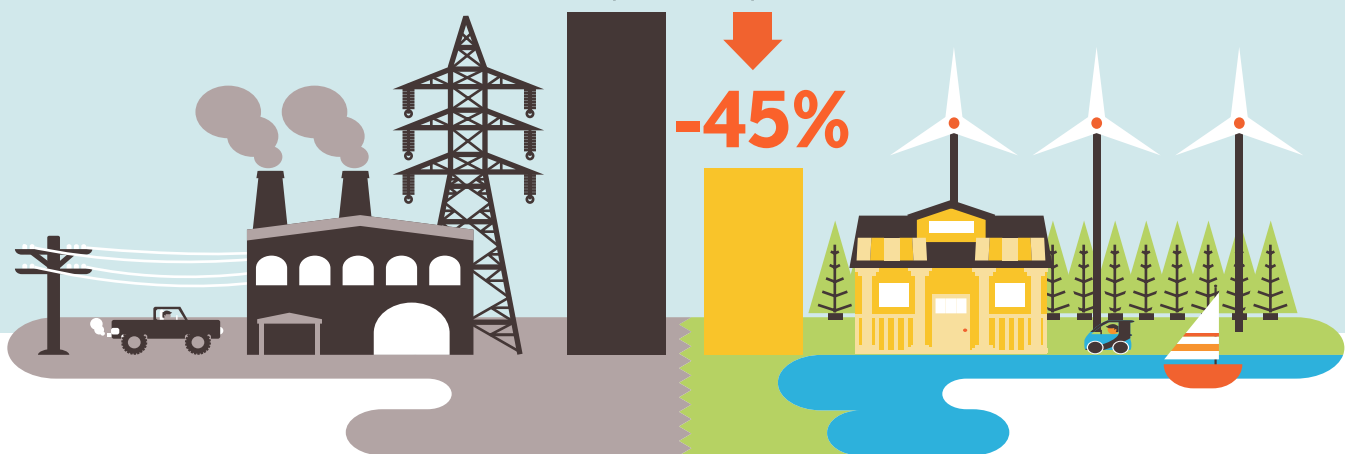
200,566

1 icon = 15,000

Using WWS electricity for everything, instead of burning fuel, and improving energy efficiency means you need much less energy.

2050 Demand with BAU

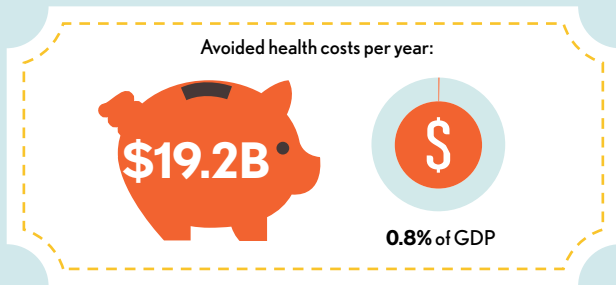
2050 Wind, Water, Solar



100% MALAYSIA

Transition to 100% wind, water, and solar (WWS) for all purposes
(electricity, transportation, heating/cooling, industry)

Avoided Mortality and Illness Costs



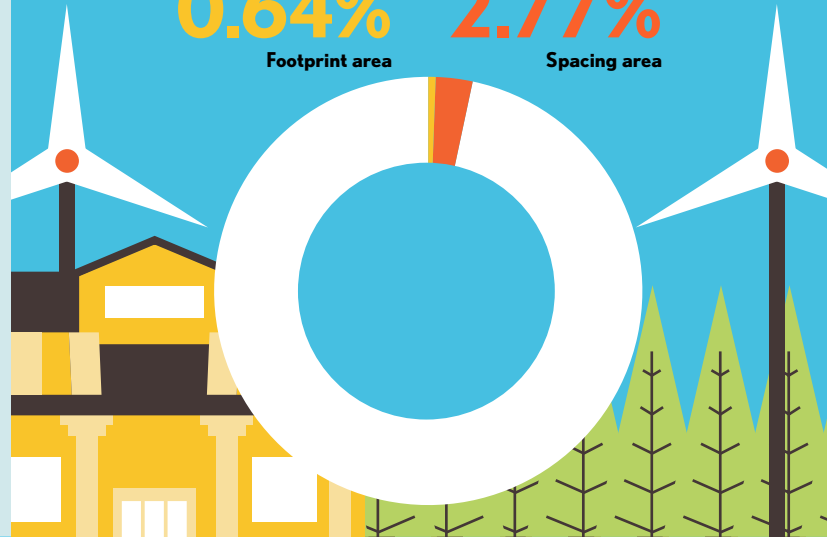
Air pollution deaths avoided every year: **1,849**



Plan pays for itself in as little as **2.2** years from air pollution and climate cost savings alone.

Percentage of Land Needed for All New WWS Generators

0.64% Footprint area
2.77% Spacing area



Future Energy Costs 2050

BAU (Business as usual) WWS (Wind, water, solar)



Average fossil-fuel energy costs*

10.9 c/kWh

*Health and climate external costs of fossil fuels are another 5.7c/kWh



Average WWS electricity costs

6.7 c/kWh

Money in Your Pocket

(P) = \$500

Annual energy, health, and climate cost savings per person in 2050: **\$3,578**



Annual energy cost savings per person in 2050: **\$463**

