

100% SENEGAL

Transition to 100% wind, water, and solar (WWS) for all purposes
(electricity, transportation, heating/cooling, industry)



Residential rooftop solar
18.5%



Solar plant
35.2%



Concentrated solar plant
10%



Onshore wind
20%



Offshore wind
5%

2050

PROJECTED
ENERGY MIX



Commercial/govt rooftop solar
9%



Wave energy
2%



Geothermal energy
0%



Hydroelectric
0%



Tidal turbine
0.3%



40-Year Jobs Created

Number of jobs where a person is employed for 40 consecutive years

Operation jobs:



6,909

Construction jobs:



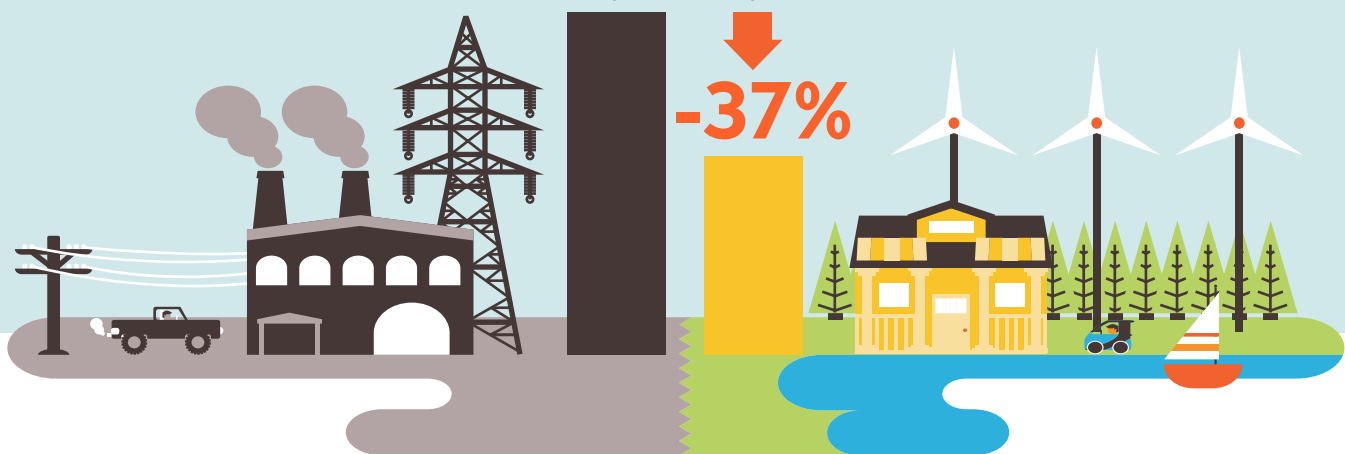
9,021

= 1,000

Using WWS electricity for everything, instead of burning fuel, and improving energy efficiency means you need much less energy.

2050 Demand with BAU

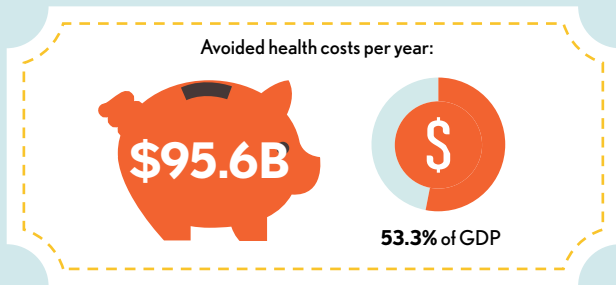
2050 Wind, Water, Solar



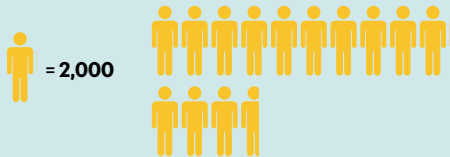
100% SENEGAL

Transition to 100% wind, water, and solar (WWS) for all purposes
(electricity, transportation, heating/cooling, industry)

Avoided Mortality and Illness Costs



Air pollution deaths avoided every year: **27,011**

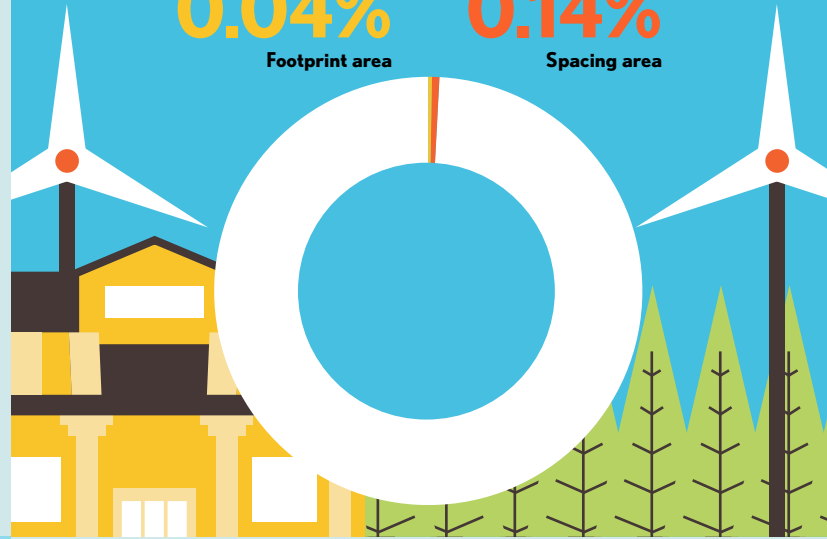


Plan pays for itself in as little as **0.3** years from air pollution and climate cost savings alone.

Percentage of Land Needed for All New WWS Generators

0.04%
Footprint area

0.14%
Spacing area



Future Energy Costs 2050

BAU (Business as usual) WWS (Wind, water, solar)



Average fossil-fuel energy costs*

11.5 c/kWh

*Health and climate external costs of fossil fuels are another 5.7c/kWh



Average WWS electricity costs

8.5 c/kWh

Money in Your Pocket

(P) = \$500

Annual energy, health, and climate cost savings per person in 2050: **\$3,660**



Annual energy cost savings per person in 2050: **\$15**

